

Anti-H_HER2 hIgG1 Antibody(Margetuximab)

Product information

GM-49468AB-10	10 µg
GM-49468AB-100	100 µg
GM-49468AB-1000	1 mg

Antibody Information

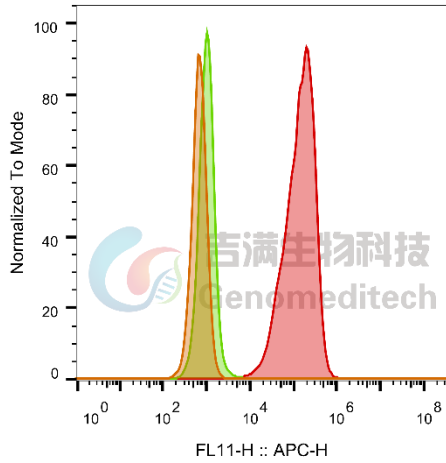
Species Reactivity	Human; Cynomolgus
Clone	Margetuximab
Source/Isotype	Monoclonal human IgG1/k
Application	Flow cytometry; Bioactivity-ELISA
Specificity	Detects HER2
Gene	HER2
Other Names	CD340, HER-2, HER-2/neu, ERBB2, MLN 19, NEU, NGL, TKR1, VSCN2, c-ERB-2, c-ERB2
Gene ID	2064(human); 102146608(Cynomolgus)
Background	Human epidermal growth factor 2 is also known as erbB-2 and Neu; it is a member of the ErbBs or type I receptor tyrosine kinase family, which also includes the epidermal growth factor receptor 1 (EGFR or HER1), erbB-3 (HER3), and erbB-4 (HER4). Amplification of the ErbB2 gene and overexpression of its product are detected in almost 40% of human breast cancers. Binding of the c-Cbl ubiquitin ligase to ErbB2 at Tyr1112 leads to ErbB2 poly-ubiquitination and enhances degradation of this kinase. ErbB2 is a key therapeutic target in the treatment of breast cancer and other carcinomas and targeting the regulation of ErbB2 degradation by the c-Cbl-regulated proteolytic pathway is one potential therapeutic strategy.
Storage	Store at 2-8°C short term (1-2 weeks).Store at ≤ -20°C long term. Avoid repeated freeze-thaw.
Formulation	Phosphate-buffered solution, pH 7.2.
Endotoxin	< 1 EU/mg, determined by LAL gel clotting assay

Version:3.1 Revision Date:12/25/2023

Data Examples

Flow cytometry

H_HER2(ERBB2) CHO-K1 Cell Line (Catalog # GM-C18996) was stained with Anti-H_HER2 hlgG1 Antibody (Catalog # GM-49468AB) or isotype control antibody, followed by anti-Human IgG APC-conjugated Secondary Antibody.

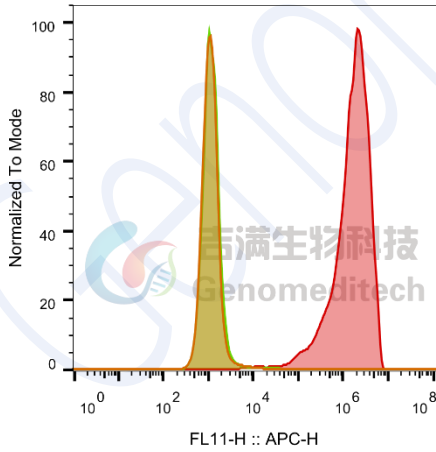


SampleID	Geometric Mean : FL11-H
CHO-K1 anti-ERBB2+APC-2nd Ab	685
CHO-K1 H_ERBB2 H_IgG+APC-2nd Ab	1042
CHO-K1 H_ERBB2 anti-ERBB2+APC-2nd Ab	132580

Fig1. FACS

Flow cytometry

Cynomolgus_HER2(ERBB2) CHO-K1 Cell Line (Catalog # GM-C21325) was stained with Anti-H_HER2 hlgG1 Antibody (Catalog # GM-49468AB) or isotype control antibody, followed by anti-Human IgG APC-conjugated Secondary Antibody.



SampleID	Geometric Mean : FL11-H
CHO-K1 anti-H_HER2+APC-2nd Ab	1158
CHO-K1 Cyno_HER2 H_IgG+APC-2nd Ab	1256
CHO-K1 Cyno_HER2 anti-H_HER2+APC-2nd Ab	1.44E6

Fig2. FACS

Bioactivity-ELISA

Cynomolgus HER2 Protein; His Tag (Catalog # GM-87571RP) was immobilized at 1 $\mu\text{g/ml}$ (100 $\mu\text{L/well}$). Increasing concentrations of Anti-H₂HER2 hlgG1 Antibody (Margetuximab) (Catalog # GM-49468AB) were added.

Bioactivity-ELISA

0.1 μg Cynomolgus HER2 Protein; His Tag of per well

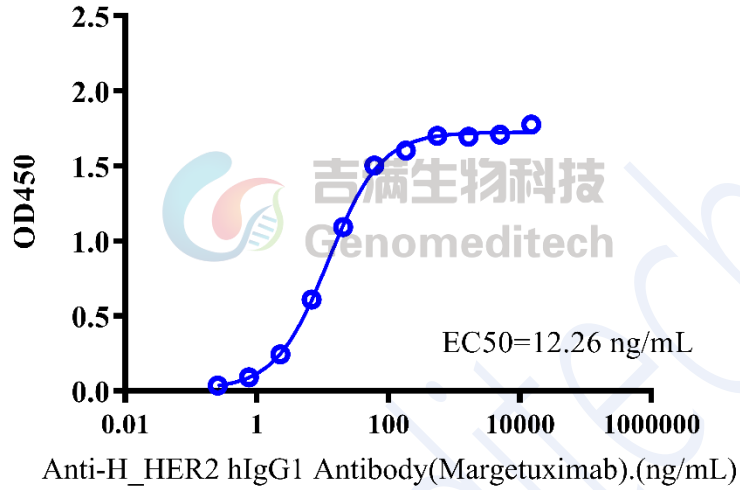


Fig3. Assay